

# Contents

> Issue 84 > August 2019

## Cover Feature

**24** Raspberry Pi Manual

## Regulars

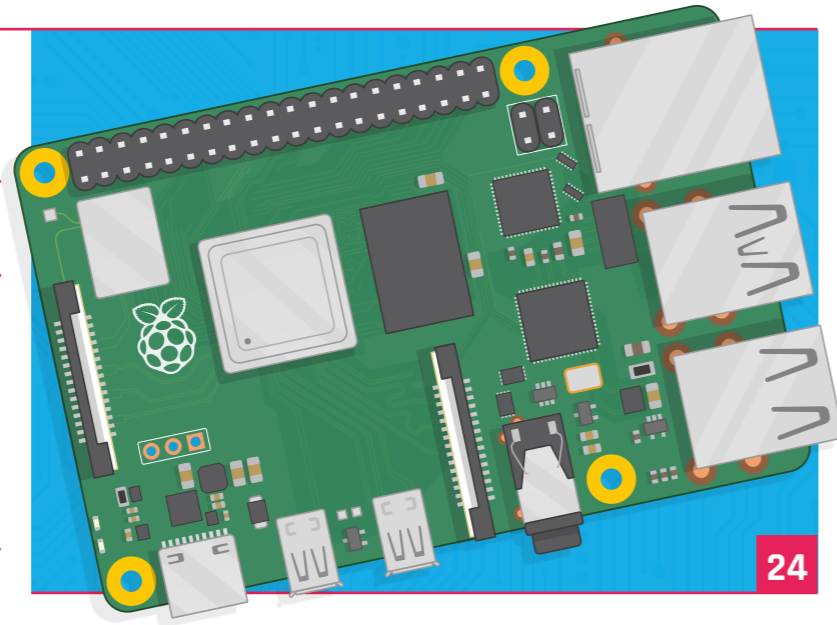
- 06** The world of Raspberry Pi
- 92** Your letters
- 97** Next month
- 98** Final word

## Project Showcases

- 10** Smart Home Herb Garden
- 14** Marvin Go-Kart
- 16** Intelligent Drowsiness Monitor
- 18** Smart Window Fan
- 20** PIC-20



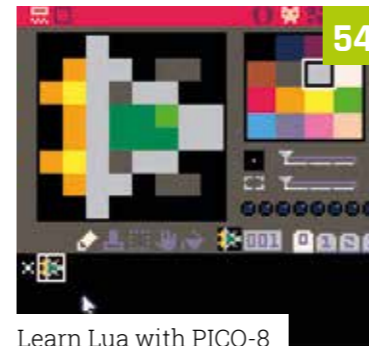
Smart Home Herb Garden



**24**



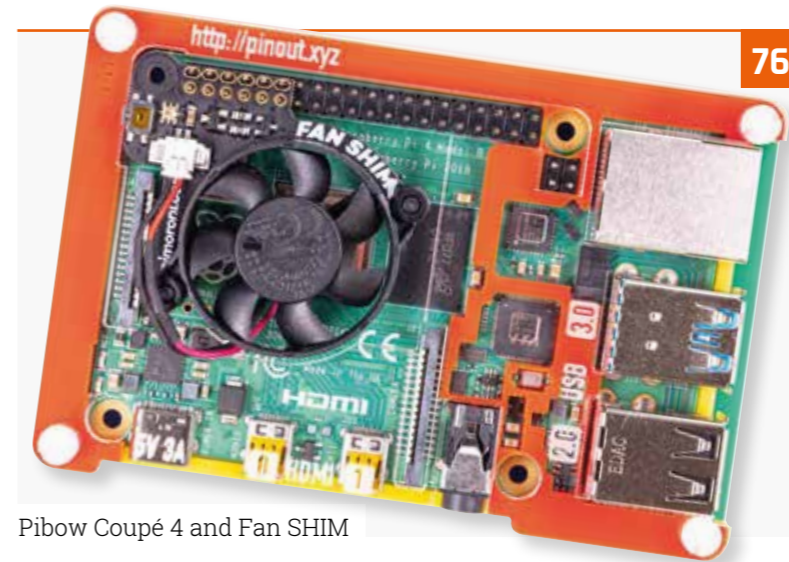
PIC-20



Learn Lua with PICO-8



LED Racer – Pi Bakery



Pibow Coupé 4 and Fan SHIM



Anne Carll interview

## Tutorials

- 36** Low-cost robot – part 1
- 40** Use SSH with Raspberry Pi
- 44** CircuitPython servos
- 50** Swear fine machine
- 54** Learn Lua with PICO-8
- 58** LED Racer – Pi Bakery
- 64** GUI user input with GTK

## The Big Feature



Scorching Summer Projects

## Reviews

- 76** Pibow Coupé 4 and Fan SHIM
- 78** Keybow MINI
- 80** Top 10 projects to upgrade
- 82** Learn Sense HAT

## Community

- 84** Anne Carll interview
- 86** This month in Raspberry Pi
- 90** Events

**WIN  
ONE OF  
THREE**

**RASPBERRY PI 4  
DESKTOP KITS**



**95**

**DISCLAIMER:** Some of the tools and techniques shown in The MagPi magazine are dangerous unless used with skill, experience, and appropriate personal protection equipment. While we attempt to guide the reader, ultimately you are responsible for your own safety and understanding the limits of yourself and your equipment. Children should be supervised. Raspberry Pi (Trading) Ltd does not accept responsibility for any injuries, damage to equipment, or costs incurred from projects, tutorials or suggestions in The MagPi magazine. Laws and regulations covering many of the topics in The MagPi magazine are different between countries, and are always subject to change. You are responsible for understanding the requirements in your jurisdiction and ensuring that you comply with them. Some manufacturers place limits on the use of their hardware which some projects or suggestions in The MagPi magazine may go beyond. It is your responsibility to understand the manufacturer's limits.